

27 ACRES

14801 RONALD REAGAN BLVD.
LEANDER, TEXAS

This property is located on Ronald Reagan Blvd. (Parmer Lane Extension),
1.5 miles north of FM 1431

Size: 27 Acres
Street Frontage: Ronald Reagan Blvd.
(530 feet)
Water Frontage: Blockhouse Creek
Municipality: Leander
Zoning: Multi-Family (MF-2-B)
Residence Size: 3,600 sf
List Price: \$3.50/sf

SUMMIT

SUMMIT COMMERCIAL INDUSTRIAL PROPERTIES, INC.

JIM BOLES / RUSS BOLES

20 CHISHOLM TRAIL ♦ ROUND ROCK, TEXAS 78681
PHONE: (512) 244-9707 ♦ FAX: (512) 244-9519
INFO@SUMMIT-COMMERCIAL.COM

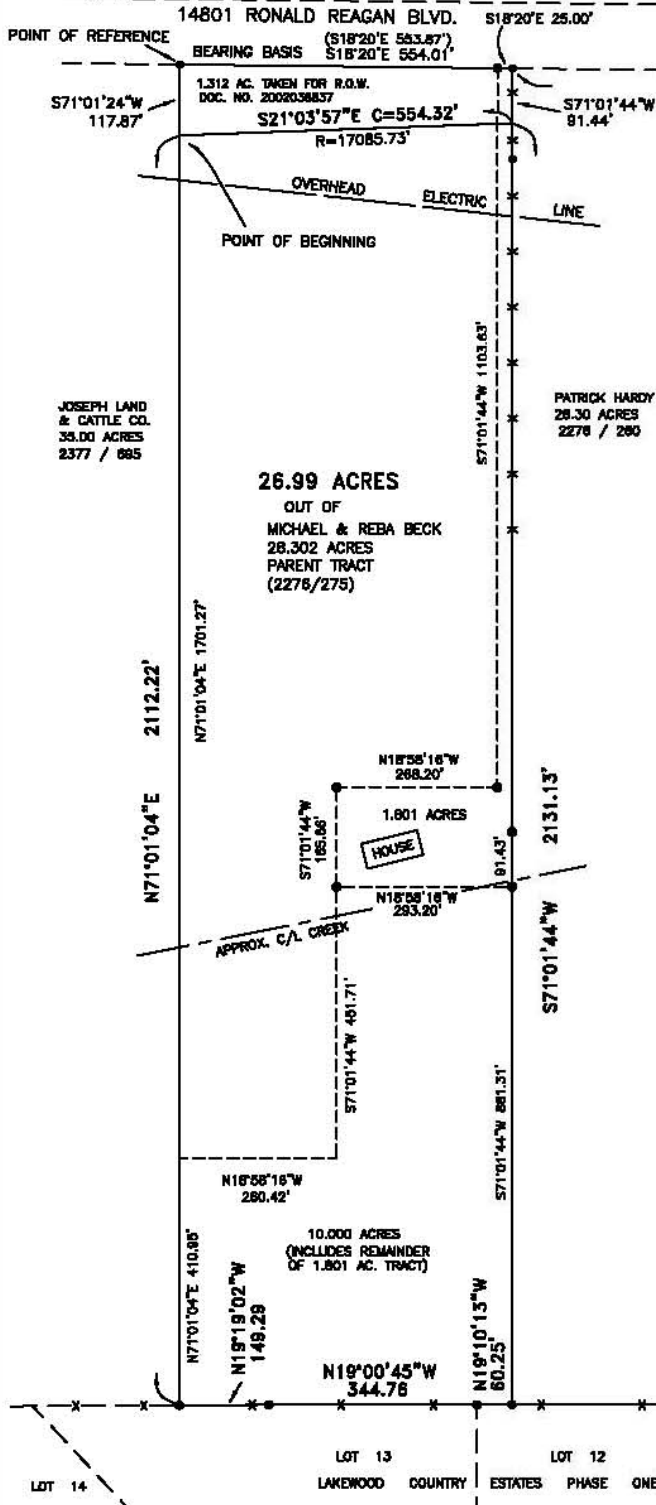




WATSON SURVEYING
 9501 CAP OF TEX HWY, #303
 AUSTIN, TEXAS 78759
 PHONE (512) 348-8566

SKETCH TO ACCOMPANY FIELD NOTES FOR
 26.99 ACRES OUT OF 28.302 ACRE TRACT RECORDED IN VOLUME 2276,
 PAGE 275, LOCATED IN THE WALTER CAMPBELL SURVEY (A-3),
 WILLIAMSON COUNTY, TEXAS

REFERENCE: BECK27AC



SCALE
 1"=200'

LEGEND

- STEEL PIN FOUND
- STEEL PIN SET W/CAP
- x- FENCE

PREPARED 22 DECEMBER 2008 BY:
 ELECTRONIC COPY PROVIDED FOR
 PRELIMINARY WORK. THIS COPY NOT
 FOR CLOSING OR RECORDING.
 STUART WATSON, RPLS 4650